

# Join the School One PTA

What will your membership help support?



**Book Fairs**

**Fall Family Festival**



**Science Fair**



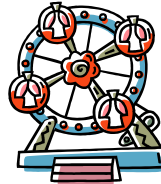
**Student & Parent Programs**



**Craft Fair**



**BSE After School Enrichment Program**



**Fun Fair**

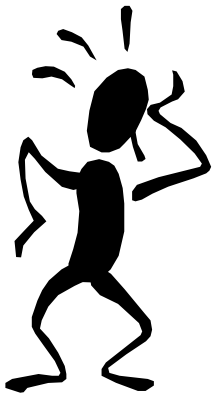


**Young People's Theater**

**Cultural Arts Assemblies for Students And**



**Much More!**



**What are you waiting for?**

**Enrich your child's Educational & Social Experience by Joining Today – Membership dues \$5.00 per adult**

Please fill out this form to become a Member

Member Names

Phone #

Child Name

Teacher

Amount Enclosed:

**MAKE CHECKS PAYABLE TO SCHOOL ONE PTA**

Any Questions? Call Gloria Testa (Membership Chairperson) @ 654-4593 or AnnMarie Erickson (PTA President) @ 322-3742