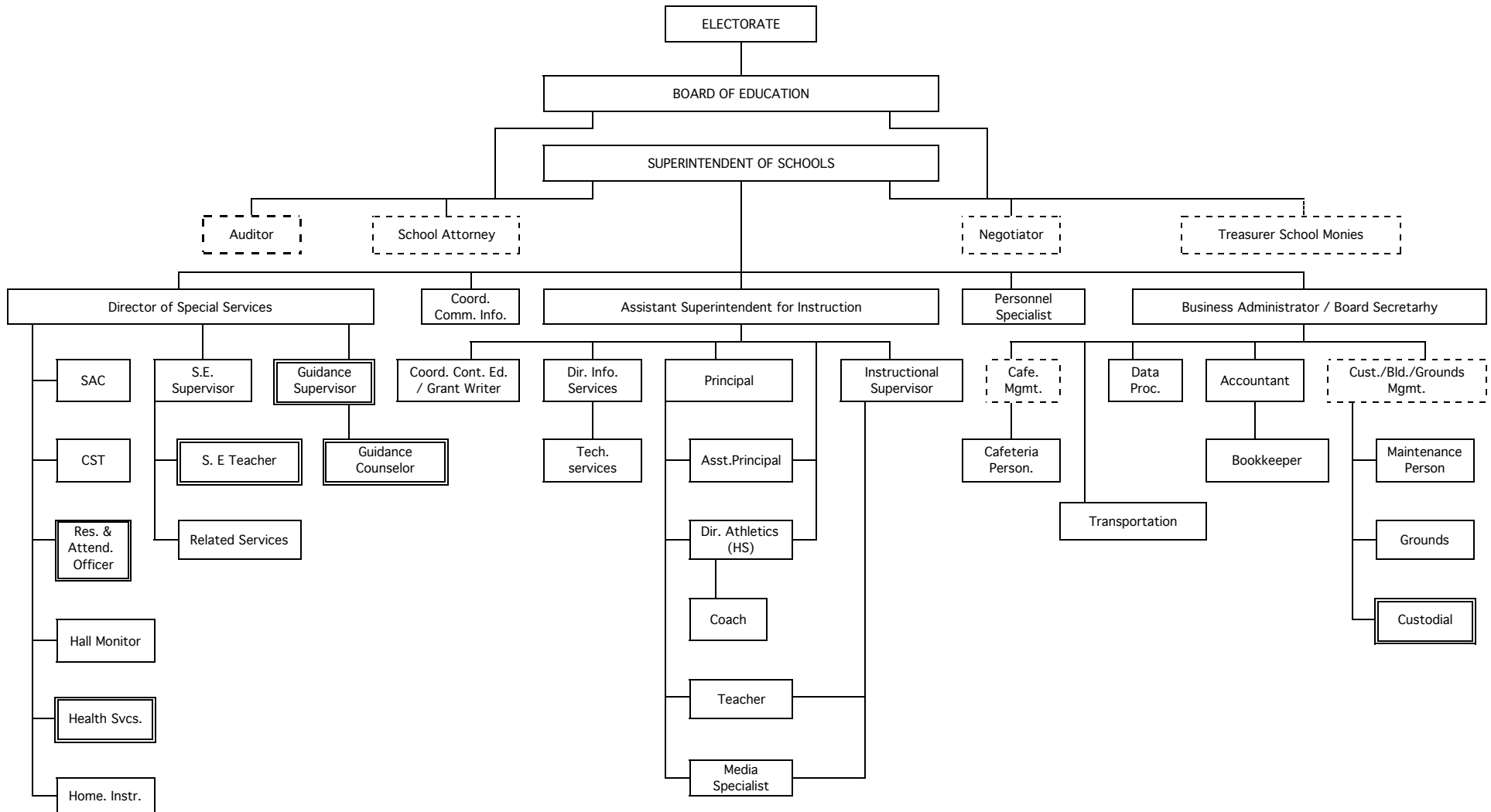


# Scotch Plains-Fanwood Public Schools

File Code: 2120E

## ORGANIZATIONAL CHART



Positions bordered by a broken line are contracted functions not performed by employees (not all contracted positions are shown)

Positions bordered by a double line also report to principals.

Secretarial/clerical/aide support is provided as appropriate throughout the district; these positions are not shown.

Approved December 19, 2000